

APTERP[®]
BUSINESS **STRATEGY** OPTIMIZED

WWW.APTERP.COM

EQUIPMENT RENTAL MANAGEMENT

ADAPTIVE **BUSINESS** CONCEPTS LLC.

ABOUT US

Adaptive Business Concepts LLC (ABC) is a global technology solutions and services provider for **APTERP**, based in Dubai, UAE, with research and development centers in UAE, and India. ABC is providing complete customizable and integrated solutions for various business segments across MENA Region. It is our assurance that our Enterprise Resource Planning solution, APTERP (Application Process Technology ERP), will deliver the complete business process tool for pioneering firms to manage the entire business processes.

APTERP, from the house of ABC, is a holistic business IT solution, developed keeping in mind the requirements of managing all the business entities of an organization under a single roof. It addresses all the business modules, namely, Procurement, Inventory, Production, Sales, Finance, QC, Payroll & HR, and Asset Management. Complimenting these functionalities is the facility to view managerial reports for effective decision-making.

APTERP seamlessly integrates all the branches to the corporate office, hence providing access to business processes from a single application. The system is highly adaptable, allowing easy customization, and helps you cope with constant change of including multiple entity, currency, & location deployment. The solution employs user-friendly graphical interface for ease of handling the functions required by the users. It clearly defines the workflow and effectively assists in managing each process. Since the system connects all locations, the top management can avail the real time information of the day-to-day activities at any given point of time. The solution is developed in conformity with the regional requirements of economic and legal statutes.

With prompt service, over the years, APTERP has evolved itself to deliver the exact thoughts and intents of the customers and partner with them in their quest for success. It is with great assurance and confidence that we are proud to represent prominent customer across the globe.

INTRODUCTION

During the conservative 90's when business process automation and enterprise resource planning was not considered a value driver rather treated as a cost for doing business, a few far sighted technologists envisioned a time when enterprise business application technology would be considered core to an enterprise's business strategy. Keeping this goal in mind, a technology platform was conceptually designed, developed and built with the aim of meeting and exceeding the strategic requirements of enterprises.

Within a short period of time, this platform gained acceptance from a wide spectrum of enterprise customers across industry sectors and organization sizes. Branded as APT – Application Process Technology, it enables collaborative work making people and organizations more efficient and effective, increasing business insight and consequently the strategic momentum needed for an enterprise to stay ahead.

APT provides an integrated view of core enterprise business processes, usually in real-time while also facilitating information flow between business functions and key external stakeholders. Built using leading edge technology, APT can provide significant results through self-service access to critical information for faster decision making. APT ERP solutions can be deployed in any organization regardless of size – from small and mid-market to large enterprises.

APT ERP

EQUIPMENT RENTAL MANAGEMENT



FUNCTIONAL MODULES



SALES



PURCHASE



INVENTORY



**FINANCE &
ACCOUNTS**



**PROJECT
MANAGEMENT**



JOB COSTING



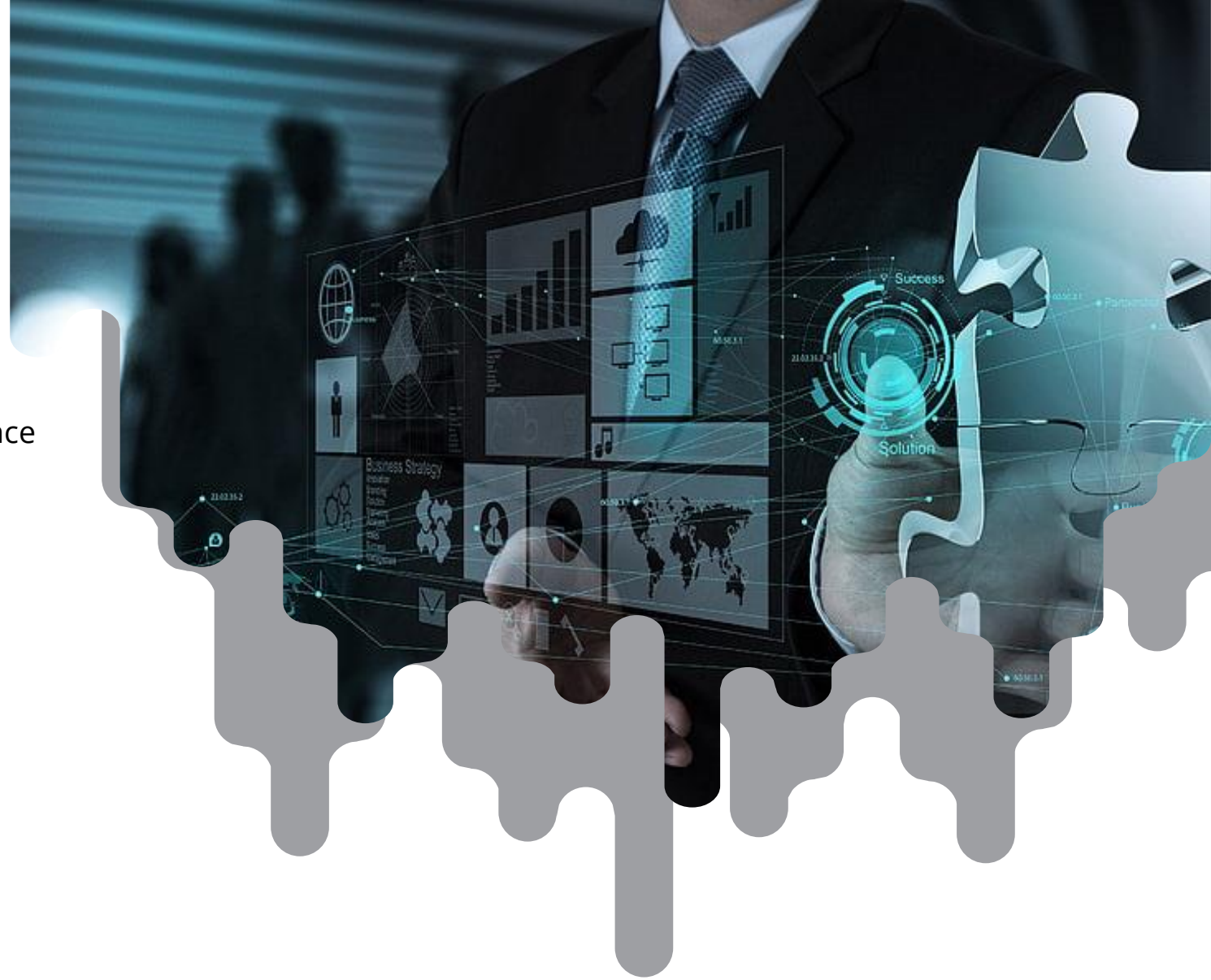
**RENTAL
MANAGEMENT**



ADMINISTRATION

KEY FEATURES

- Project Management stage, sub stages, cost units
- Inventory wise and amount wise Budgeting's & Variance
- Multi-Dimensional Job Costing
- Inventory Level Allocation of Jobs
- Graphical Presentation of Job Revenue & Expense
- Multi-level electronic document authorization
- Intelligent Dashboard system for alerts and triggers
- Extended job wise time sheet entry
- Automated job wise payroll processing
- Interactive System Reports
- And More.



KEY FUNCTIONS

- Project Management
- Import & Local Purchase
- Time Sheet
- Integrated Accounts & Finance
- Job Ledger
- Job Invoice
- HR & Payroll
- Fixed Assets
- Inventory Management
- Subcontract Invoice
- PDC Management
- Cheque Printing
- And More.

JOB COSTING

- Customer Creation
- Pre Sales (Enquiry)
- Quotation/Tender
- Sales Order
- Bill of Material
- Material Requisition
- Material Issue to Project
- Job Payment Application
- Job Invoice
- Sub Contract Order
- Sub Contract Invoice
- Job Wise Time Sheet Entry
- And more.



RENTAL MANAGEMENT

- **Create Job Details**

Enter details of the job to be performed. Asset can be machines, including scaffolding items inward and our ward, heavy equipment, ships, air cargo.

- **Job with resource allocation**

Allocate resources like material, labor, sub asserts, outsourcing and overhead.

- **Asset Delivery**

Enables issue of assets for a specified job

- **Asset Return**

Return of assets after completion of job.

- **Asset Receipt**

Leasing assets for a job.

- **Asset Receipt Return**

Return of assets after completion of a job.

- **Billing Time-sheet**

Enter details of manpower worked for a job on a daily basis. This is to be billed to the customer.

RENTAL MANAGEMENT

- **Work-sheet Daily**

Maintained for Payroll. This is a daily entry record for each employee and number of hours worked by them.

- **T&M Invoice**

Generates an invoice of the materials (assets) and labour used for the job.

This can be generated on a day-wise or month-wise basis.

Workflow

- Creation of job details with estimation of material to be used.
- After job approval, assets are issued for the job.
- After job completion, assets returned.
- Invoice is made on asset delivery and asset return. The constraints involved are delivery date and return date.

REPORTS

- Asset Stock.
- Asset Delivery Report.
- Asset Return Report.
- Job Costing Variance Report.
- Job Invoice Forecasting Report.

All reports are easy to use starting with user friendly viewing screens and option to group the viewed report by category using simple drag and drop procedures. In addition to printing out reports in a wide variety of formats including pdf files, reports can also be directly e-mailed or also exported out into excel as required by the user.

PURCHASE MODULE

- Supplier Creation
- Local Purchase Order
- Purchase Invoice
- Import Purchase Order
- Cost Statement
- Landed Cost
- Purchase Return
- Direct Job Purchase
- And more.



INVENTORY

- Item category
- Items
- Service Item Category
- Service Items
- Units
- Good Received Note
- Stock Receipt
- Stock Issue
- Opening Stock
- And more.





FINANCE & ACCOUNTS MODULE

- Multicurrency
- Chart of Accounts
- Account Types
- Account Heads
- Opening Balance
- Receipt Voucher
- Payment Voucher
- Contra Voucher
- Journal Voucher
- PDC Issue Voucher
- PDC Received Voucher
- Cheque Handling
- Reconciliation
- Monthly Closing
- Financial Year Closing
- And More.

ADMINISTRATION MODULE

- Manage Users
- Change user Profile
- Backup
- Audit Trial
- Document Summary
- System Audit
- Reorganize Data
- Keyboard Tracker
- Online Support
- And More.





Finance & Accounting

Sound, responsible financial management is at the heart of business success. APT ERP solutions for financial management give your people a way to raise the visibility of financial metrics and the effectiveness of financial management throughout your organization—all using familiar tools and existing skills.

Purchase & Inventory

To keep your retail business running smoothly, you need a cost-effective inventory management system. APT ERP solutions can help you improve inventory management processes. APT ERP Inventory is an extended inventory module for all kinds of industries like general trading, drugs and pharmaceuticals, auto motives, etc.

Material Procurement

APT ERP Procurement allows organizations to integrate supply activities across enterprise functions and helps procurement become a business-critical activity. APT ERP Procurement enables organizations in engaging key users and suppliers to leverage for better spend compliance. It delivers significant cost savings by improving order processing efficiencies and contract compliance.



BOQ / Budget Entry

It facilitates to upload the BOQ (both quantities and amounts) of the project. It allows different stages of quantity and cost break down as Project, Stages, Sub stages & Cost Unit. This is helpful in comparing and controlling job cost. Option of having revised and Targeted budget. Option of lump sum value for some items where quantity measurement is not possible.

Job Costing

Job costing is the process of tracking the expenses incurred on a job against the revenue produced by that job. Job costing will generally be applicable for the industries like building Contractors, subcontractors, architects, consultants, etc. The Job costing reports in the APT ERP Solutions help you ensure that all costs involved in a job have been properly invoiced to the customer.

Material Cost

Cost of the material incurred for a project. It is tracked from purchase and Inventory module.



Man Power Cost

Labours will be working on different projects in the same month. Specially designed time sheet to track labour cost project wise, stages and sub stages wise. This will generate automatic Payroll for the labours.

Plant & Machinery Cost

Tracked from P&M rents paid and its depreciation

Sub Contractor Cost

Tracked from the sub contractors module



Human Resource

Human Resources Management (HRM) module is a complete suite of Human Resource Management system. It takes care of entire human resource cycle right from employee joining to retirement. It handles enterprise-wide core human resource activities such as recruitment management, employee management, training, attendance & payroll, leaves, tours & travel management, performance evaluation, and loans management.

Time Sheet & Payroll

Payroll module generates quick employee (Staff in projects and Office staff) pay sheet & Pay slip. Daily data consists of employee wise, project wise, stages wise and sub stages wise normal working hours, normal overtime hours, special over time hours. Employee can work in same day for any numbers of projects, stages and Sub stages.

Miscellaneous Cost Job Revenue / Sales

Tracked from purchases and Payments module. APT ERP Sales & Distribution provides end-to-end automation of an organization's sales cycle this comprises quotation processing, order processing to invoicing and delivery with multiple pricing methods, payment terms and delivery schedules. It does support multiple units of measurements and currencies.



Job Revenue

This will facilitate to make invoices based on the percentage of work done in various stages and Sub stages of a project. This will take care of variations, retention receivables, advance deductions etc. Related accounting will be done automatically.

Security and Administration

Multi level security and access permissions View, Add, edit and delete permissions. New user creation (Login & Password) Data Backup & Recovery Audit Trail.

Cost Control & Alerts

APT ERP helps in controlling the project cost. When ever you want to commit a cost on the project system will compare it with targeted budgeted figures (both quantity and cost) and gives you the alert. This facility will throw the light on the performance of estimator and wastage at work. This will show in which stages and sub stages you made a profit or loss. This statistical data will help the estimators to prepare a better future tenders. There are many alerts in the system like budget exceeding, Payable reminders, PDC alerts, receivable alerts, and alerts to the MD if LPO approval is pending.

THANKYOU

APTERP[®]
BUSINESS STRATEGY OPTIMIZED

ADAPTIVE BUSINESS CONCEPTS LLC.

PO Box 122779, Dubai, United Arab Emirates.

Email: Sales@apterp.com, Tel : +971 4 3960 461

Mobile: 056 175 0641, 056 152 1521