

APTERP®

BUSINESS STRATEGY OPTIMIZED

WWW.APTERP.COM

ABOUT US

Adaptive Business Concepts LLC (ABC) is a global technology solutions and services provider for **APTERP**, based in Dubai, UAE, with research and development centers in UAE, and India. ABC is providing complete customizable and integrated solutions for various business segments across MENA Region. It is our assurance that our Enterprise Resource Planning solution, APTERP (Application Process Technology ERP), will deliver the complete business process tool for pioneering firms to manage the entire business processes.

APTERP, from the house of ABC, is a holistic business IT solution, developed keeping in mind the requirements of managing all the business entities of an organization under a single roof. It addresses all the business modules, namely, Procurement, Inventory, Production, Sales, Finance, QC, Payroll & HR, and Asset Management. Complimenting these functionalities is the facility to view managerial reports for effective decision-making.

APTERP seamlessly integrates all the branches to the corporate office, hence providing access to business processes from a single application. The system is highly adaptable, allowing easy customization, and helps you cope with constant change of including multiple entity, currency, & location deployment. The solution employs user-friendly graphical interface for ease of handling the functions required by the users. It clearly defines the workflow and effectively assists in managing each process. Since the system connects all locations, the top management can avail the real time information of the day-to-day activities at any given point of time. The solution is developed in conformity with the regional requirements of economic and legal statutes.

With prompt service, over the years, APTERP has evolved itself to deliver the exact thoughts and intents of the customers and partner with them in their quest for success. It is with great assurance and confidence that we are proud to represent prominent customer across the globe.

INTRODUCTION

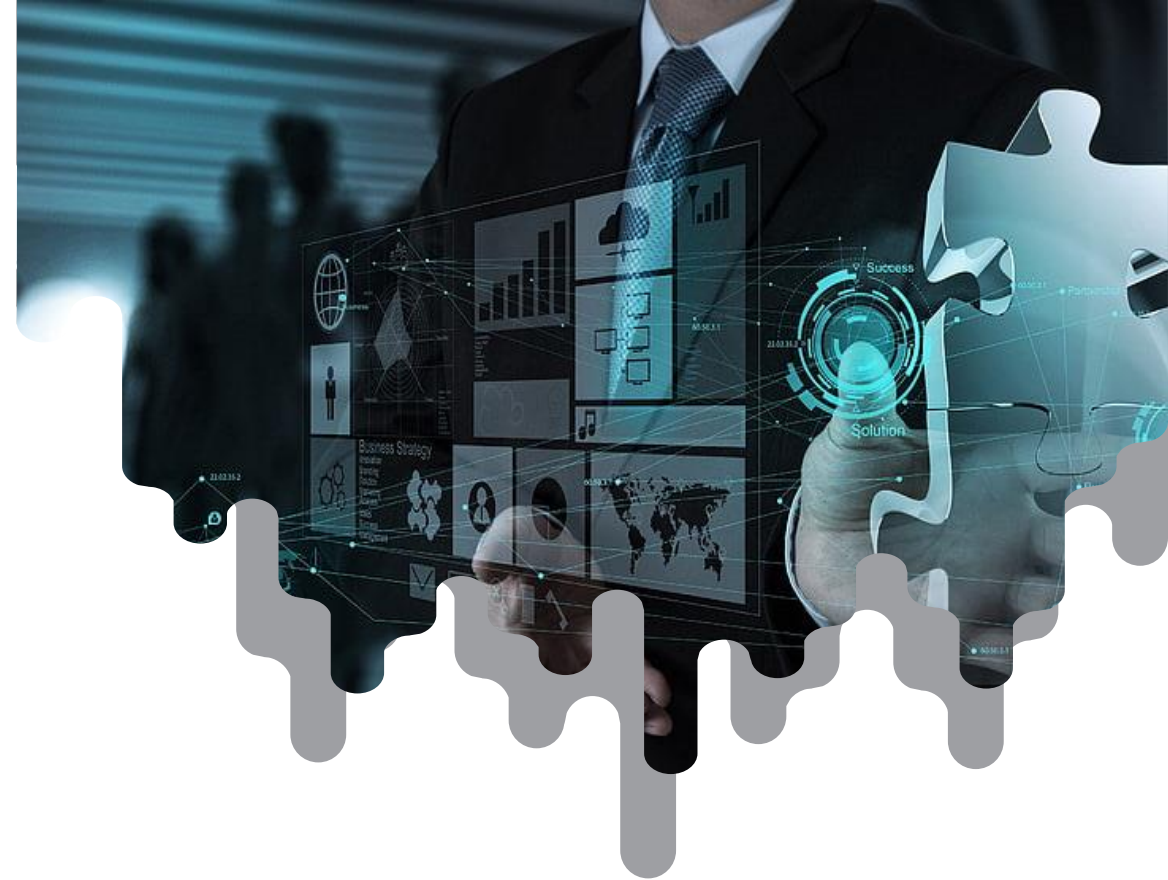
During the conservative 90's when business process automation and enterprise resource planning was not considered a value driver rather treated as a cost for doing business, a few far sighted technologists envisioned a time when enterprise business application technology would be considered core to an enterprise's business strategy. Keeping this goal in mind, a technology platform was conceptually designed, developed and built with the aim of meeting and exceeding the strategic requirements of enterprises.

Within a short period of time, this platform gained acceptance from a wide spectrum of enterprise customers across industry sectors and organization sizes. Branded as APT – Application Process Technology, it enables collaborative work making people and organizations more efficient and effective, increasing business insight and consequently the strategic momentum needed for an enterprise to stay ahead.

APT provides an integrated view of core enterprise business processes, usually in real-time while also facilitating information flow between business functions and key external stakeholders. Built using leading edge technology, APT can provide significant results through self-service access to critical information for faster decision making. APT ERP solutions can be deployed in any organization regardless of size – from small and mid-market to large enterprises.

BUSINESS BENEFITS

- **Management Control** - Management can now define work flow definitions in the organization by routing information and documents via the ERP system, thereby ensuring that time and efforts are spent for critical tasks by those responsible for its execution.
- **Decision Making** - APT offers organization with the insight and vision that is required for right decision making. Top management can easily delegate decision making downwards leaving them free to focus exclusively on business leadership, vision and strategy.
- **Sales Performance** -To give your sales team a clear idea of who your best customers are and what kind of business sectors they are in, all that is required is up to date information that will tell them exactly where your business has been successful with past quotes and sales orders. This opens up the possibility of doing more business by retaining them.
- **Control Overheads** - APT provides the necessary tools which can help users to retrieve information within no time, and thus help in cutting down the overheads involved. It provides different levels of insight through use of exemplary analytical tools to aid managers towards an effective solution.



BUSINESS BENEFITS

- **Cost Visibility** - Knowing all the various costs involved in any business is crucial in making plans for any business. APT helps to identify in a single shot, all the costs that are involved in a process - be it sales, purchases, production or financial accounting. By offering such a bird's eye-view of costs, managers are better equipped to make important decisions.
- **Reduce cost and risk** - Simplified deployment and optimized use of IT infrastructure and resources.
- **Increase business productivity** - The business process across the system is integrated with no duplication of data in a single view.
- **Real Time Data** - The real time capabilities and the ability to see what is going on with in the company as it happens for dealing with high volume of business process.
- **Centralized System** - The data will be placed into a centralized location, making it easier to perform the on going business activities with the existing historical data. With an ERP system, the company will never have inventory shortages or wasted time spent transferring files.
- **Powerful Reporting** - Easy to use, powerful reporting for the whole organization across the whole suite.



KEY FEATURES

- **User friendly** - The information can be accessed fast and easy manner with user friendly screens which are designed on desktop, web and mobile devices.
- **Vast Functionalities** - End to End business functionalities with the solutions that enable enterprise wise reporting, analysis, advance analytics and collaboration.
- **Self Service** - Users in the respective departments of an enterprise can access the required information by themselves with out relying on IT support team.
- **Less Complexities** - Management and deployment complexities are reduced and information across the business can be accessed using a single platform.
- **Platform Independent** - APT application created on platform independent - Compactable for Windows, LINUX, MAC, IOS and Android.
- **Multi Lingual** - APT can be used for Multiple languages.
- **Dual Database** - Database can be MSSQL, Oracle, My SQL.
- **Query and Reports** - All reports can be on Data Query, Print, Design type and Analytical format.
- **BI's and KPI** - Business Intelligence and KPI's are well balanced.
- **Vertical Integration** - System can be linked to any Machines and other hardware using PLC and SCADA.





WHY CHOOSE APT?

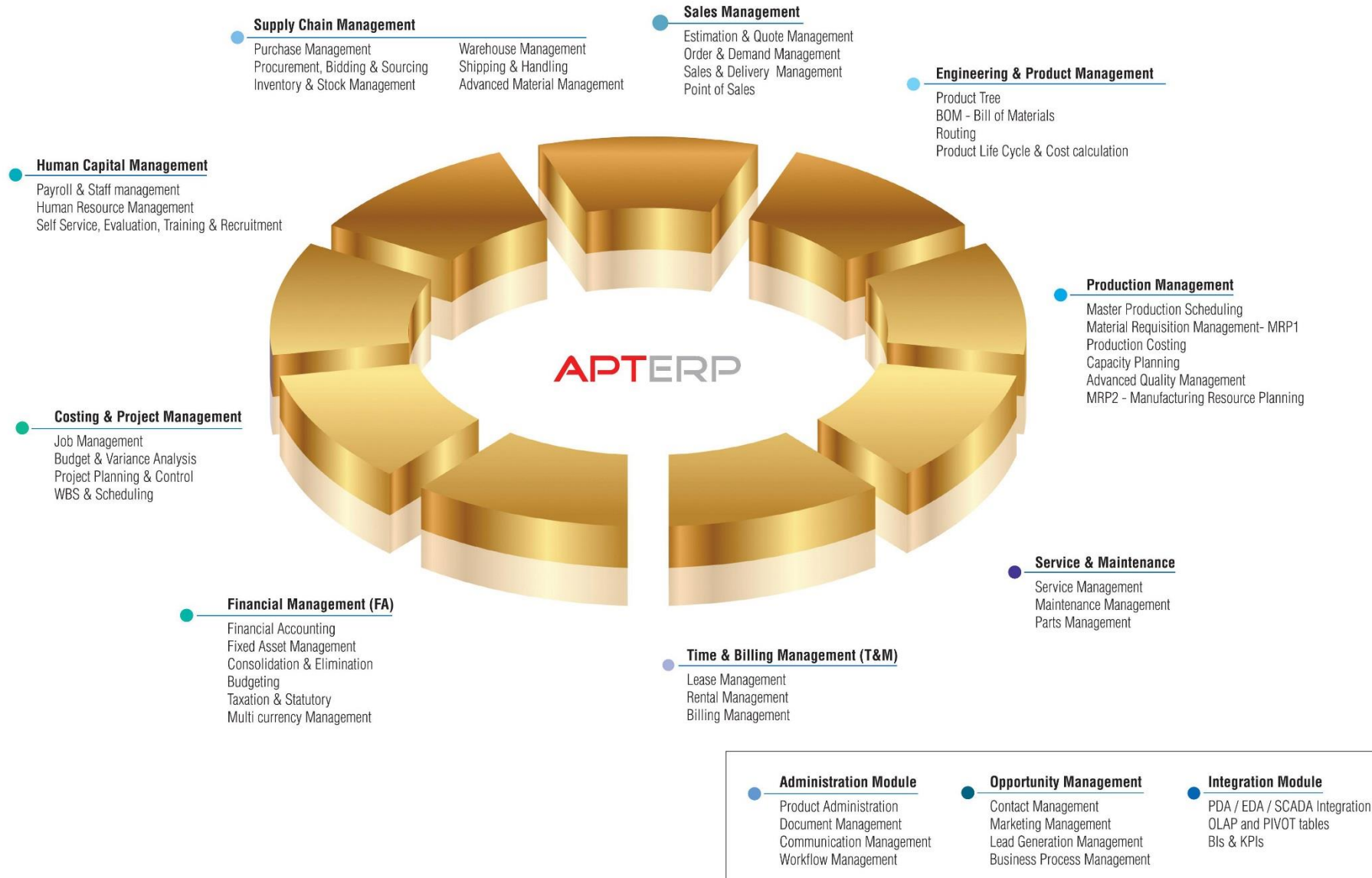
- **Fully optimized** - APT using organization is fully optimized their all process and operations.
- **Total usage** - APT make sure the organization is using its full capacity in effective manner.
- **Latest technology** - Built on the core technology architecture foundation to fit any latest technologies without losing security and confidentiality.
- **Right decision making** - Immediate access to real time information enables speedy decision making in less time and effort.
- **Multi dimensional** - APT helps to run companies in multiple activities without losing its operational challenges and goals.
- **Future opportunities** - Offering solutions with ease of customization and configuration to the interface, documents and reports where in the business could be up and running no time with the future adaptations to leveraging opportunities.
- **Secure platform** - To ensure a secure and robust platform for maintaining business data. The solution has high level of security for effective control over data, document and infrastructure to fully support organizational requirements.



WHY CHOOSE APT?

- **Regulatory compliance** - Adherence to all the IT standard best practice to maintain the trust and better business relationships. Also APT serve companies to obey full transparency on data and process with internal, external and system audits for each countries rules and regulations. All statutory and taxation requirements are well optimized and can be user definable as per compliances and future requirements by the administrator.
- **Caring hands** - ERP is the BMS of an organization, so our service modals are fully dedicated to our trusted customers and end users using our product and Services with caring hands with satisfaction and confidence.
- **APT future** - Once the ERP is fully live the biggest challenge is the extend services and transparency, there APT is giving you the full confidence and power to go any extent as the right partner.

APTERP-BUSINESS STRATEGY OPTIMIZED



APTERP – Application Process Technology Enterprise Resource Planning Software Solutions

- APTERP Conceptualized and designed based on the Product Engineering and Life Cycle Methodologies over Three decades of continuous innovations as a Business management and optimization tool. APT created based on SOA (Service Oriented Architecture) is capable of holding 12 Modular groups and 60 Module categories and 240 Process Modules. APTERP is optimized for 60 business verticals readily and can be conceptualized for any business domain of any simple or complex requirements.
- APTERP Architecture can be deployed fully or modular wise for Holding/Group/Single Companies with their business activities managed centrally and provide a consolidation according to the need irrespective of its Geography, Size, Location and Activity. The product can be optimized for complex processes in Distribution, Sourcing, Engineering, Production Planning and Control, Time and Billing, Maintenance and Service Management along with Asset Management(Own or Leased Assets), CRM and Sales, Procurement and Bidding, Human Capital Management & Financial Management as one system. It has an inbuilt communication tool, Document Management, Workflow Management and Integration tools. It encompasses industrial best practices and supports taxation and statutory requirements for any country specific requirements.
- APTERP whole concepts, product and extensive Services are derived and created own creativity, experience, challenges, opportunities, thoughts, derivations and creative ideas based on the long years of association, innovations & experience in the field. Using APTERP, we manage our stakeholders well in advance at all times to keep momentum always.





APT on Web

APT on Web has been developed fully on JAVA framework to operate as a thin client from any location. The application can be run on Windows/MAC/Linux OS and support multi databases – MSSQL, Oracle & MySQL. It enables multi lingual and can be used as per the country specific requirements using setup control panel. APTW3 provides safe and secure on line access guarantee with Secure Socket Layer (SSL) technology. In addition it provides secured user accounts authorization with OTP (One time password) technology. APTW3 is developed as SOA (Service Oriented Architecture) for communicating with other APT modules or other applications.

APT on Mobile

Mobility enables connectivity with everywhere. APT on Mobile enable your internal and external partners' (Clients, Vendors, Employees & Partners) to operate their business needs in your mobile at any time. APT Mobility works on Android, IOS and Windows platforms to connect with any devices. APT Mobility helps to view all the documents for various authorizations & approvals in real time in addition to viewing data analytics in the form of Workflows, BIs, KPIs and Dash Boards.



APT On Premise

APT on Premise is a solution developed in primitive architecture and can be useful for companies operating locally. APT on Premise can be operated from any location and be connected with APTW3 and APT Mobility on the specific need. APT on Premise can manage Big Data in a simpler and more convenient as traditional business operation modal. APT on Premise can be use effectively in term to reduce the operations and infrastructure cost. APT on premise can be use as a tool in terms of higher level of confidential, sensitive and critical data management operations.



APT on Cloud

APT on Cloud is a business model created for companies to run application and data without any infrastructure. It is purely operated as SaaS (Software as a Service) and can be available on-demand basis. APT on Cloud offers various solutions to the customers in terms of Application, Data and Storage.

APT on Demand

APT started its journey of its own product innovation since 1991. APT optimized more than 60 Business activities, 600 Customers and 30,000 End users catering all their requirements fully and confidence. APT on Demand can be conceptualized, developed and deployed for any specific requirements with quality and in time. We hold and retain the best team in R & D, Design, Development and Support. We use APTERP internally to work as a business process management and development tool to optimize our business processes(R & D, Concept Creation, Product Architecture, Project & Support Management, Sales & Marketing, Human Resource, Finance in system including set workflows, communications, Integration and Document Management. APT on Demand will deliver in time any type simple or complex projects with in time line, high quality and highest customer satisfactions.





BUSINESS SOLUTIONS

APT helps customers implement best-in-class solutions for operational excellence, business analytics, and risk compliance management. Our core well integrated business solutions address a range of customer needs, including SRM (social relationship management), CRM (customer relationship management,) procurement, Service Management and Supply Chain Management.

- Optimized CRM best fit for any industry.
- Additionally tuned Procurement management useful for free zone trade operations.
- Customizable Workflow to manage any Service Industry.
- Well routed Supply chain management.
- Optimized Production Planning & Control module.
- Proven Time and Billing management.
- Different Estimation methods to manage different product level operations.
- Intelligent MRP1 and MRP2.



INDUSTRY SOLUTIONS

APT industry solutions leverage our comprehensive portfolio of products to address the unique business requirements of specific industry segments. With solutions for government, healthcare, automotive, real state, media and entertainment, and more, APT enables you to speed time to market, reduce costs, and gain a competitive advantage.

- Save Time & Cost.
- Ready to Use.
- Workable & Proven Solutions.
- Implement Competitive Solutions.
- Gain more Knowledge.
- Adopt best Practices.



SMALL & MEDIUM COMPANIES SOLUTIONS

APT offers midsize companies the power of scalable, enterprise-class technology at a price that is right for their growing business needs. With APT optimized implementation tools, and services to help organizations quickly implement and adopt enterprise-class applications.

- Start with the required Modules.
- Add the modules when it is required.
- Enable advanced features to overcome future challenges.
- Start with one company and reach as Group Level and Holding Company.
- Manage your Cost centers and Departments .
- Take the full control of your Operations.



APT OPTIMIZED SOLUTIONS

APT Optimized Solutions are fully ready to use for the new customers to implement solutions with standard requirements and adaptable best practices.

- Easy to Implement.
- Easy to Use.
- Easy to Manage.
- Easy to Adopt.
- Easy to Integrate.
- Easy to Secure.



TECHNOLOGY SOLUTIONS

APT technology solutions are designed to address complex application and system integration requirements across diverse enterprise environments.

- Integration with SCADA Systems.
- Integration with PDA Systems.
- Integration with Weight Machines.
- Integration with Bar-code Machines.
- Integration with Ready Mix Unit.
- Time & Attendance Machines.

SERVICE

It is a truism that the real value of investment in a software product and solution is realized only when business operations run live by intensively utilizing it. This can only be achieved by harnessing the efforts of all the members from both sides. When you contemplate the reorganization that adapting requires, you are tempted to put it away. Adapting involves People, Partners, Systems, Procedures, Locations and many other individual things that make it all seem too big a task to attempt. It takes deft project management skills and a skilled practitioner to make it all come together for you. This is the very core of our attention comes into play with APT Team. APTERP has a defined and simple process that is easily understood by the client but at the same time creates a strong structure upon which the project can be defined and executed by the respective service team. The objective of our methodology is to minimize the time required for the project to 'go live'. To achieve this objective and to translate the owner's vision for the business into a live working solution requires a superlative communication skill. With frequent and rigorous training of the latest trends, techniques and emerging knowledge in required domains, our team possess special skill that helps to realize the customer's need to the required feature.



PRODUCT DEVELOPMENT

The challenge of product development lies in getting the right product to match user expectations within the realms of available technology. This is where the rich experience of our product architects and consultants over the past decades, whose skills in Designing, Developing, Consulting, Customizing and Implementing, has demonstrated to clients from more than 60 different countries. Using Product development schedules, the team deliberates to meet the quality goal of delivering the product/project within scheduled constraints. To meet this goal, program management owns and drives the schedule, the features, and the budget for the project. Program management coordinates resources, facilitates team communication, and drives critical decisions where consensus cannot be achieved. The project team delegates the development role to the product team, to build the assigned system that meets the specification and customer expectations. The product undergoes rigorous testing by a dedicated team of QC experts to address all possible issues prior to releasing the product to the implementation team. They test the product modules from the beginning of the development cycle up to integration testing. This assures that all issues are known and addressed prior to releasing the product/project.



PROJECT MANAGEMENT

Setting the project management team is the success of ERP implementation. First setup the project manager, department heads and allocate the responsibility on each process with departments. Set all the challenges, derivatives and objectives first, discuss and elaborate with the product consultants each objectives in detail. As the customer advocate to the team, project management is responsible for understanding customer requirements, creating the business case, establishing the shared project vision between team and customer, and ensuring that any solution that the team develops meets the needs of the customer by solving their particular business problem. As the team advocate to the customer, project management is responsible for high-level communications and managing customer expectations. High-level communications include public relations, briefings to senior management of customers, marketing to users, demonstrations, and project launches. Managing expectations is the key role of project management once the vision is set. It is considered a primary role because it can determine the difference between success and failure. High level of transparency, dedication and determination is maintained by constant two-way communication with the customer during the feature development and projection period, for necessary changes needed with regard to customer expectations that can ensure success. Our Project management makes it policy to include the customer in the trade-off decision-making process and inform them of changing risks and other challenges.



CONSULTATION & TRAINING

The right Consulting is the key success of ERP roll out. The consultant is capable to understand the industrial objectives and challenges how to set up the workflows in the ERP product. The consulting team having good years of experience, determination,dedication, qualification and track records. With the goal of client end-user to feel instantly comfortable with navigating and using the system as defined by their respective user roles, the training team takes every effort to create training documents that can effectively transfer working knowledge to the users following the guidelines of the consultant and project manager. This begins with the training team becoming familiar with the design of the product as it relates to client requirements. This is achieved by working in close coordination with the consultant and Project Manager during the design of the application so that the user interface is well defined and simple for users to navigate. This forms the source of information upon which training guidelines and working instructions are created and delivered to users. The training team converts the design features of the final application build, into user guidelines and working instructions that facilitates rapid adoption of the system by users working in different roles.



SUPPORT MANAGEMENT

The support team enters the picture immediately after the project has been commissioned and accepted by the client. To use a simple analogy, this team operates as the maintenance team. If you were to think of any other asset investment such as a manufacturing plant or any asset with a large number of moving parts, it is built using a lot of components and furthermore sits atop your computer hardware infrastructure. All of these hardware and software components have to be kept in peak working condition in order that business operations are smooth with maximum up-time and minimum downtime. The project commissioning document specifies the maintenance schedule for the system which can be carried out on site by a qualified support executive. Normal support functions are carried out during daily business hours, however, critical support issues are attended 24 X 7 where required successfully bring closure to support requests. When user count increases beyond a certain point, it is recommended that the business consider inducting a dedicated IT administrator or coordinator to handle routine system management tasks.



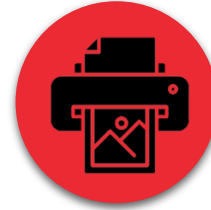
INDUSTRIES



**Food &
Ingredients Production**



**Design, Display &
Exhibitions Manufacturing**



**Printing &
Paper Manufacturing**



**Coir, Palm Fibre &
Rubber Manufacturing Industries**



**Chemical &
Plastic Production**



**Joinery, Wood &
Acrylic Manufacturing**



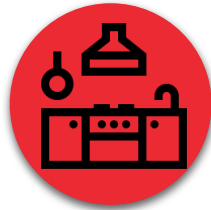
**GRP, Water Proofing &
Coating Membranes Production**



**Switchgear &
Panel Boards Manufacturing &
Assembling**



**Consumer Products, Lighting &
Electronics Distribution**



**Kitchen Equipments, Sanitary &
Joinery Manufacturing**



**Ship Building, Repairing &
Chartering**



**Healthcare &
Pharma**

INDUSTRIES



Higher Education & Research



Engineering



Industrial Machinery & Component Manufacturing



MEP & CIVIL Contracting



Textile & Cotton Industries



Media & Event Management



Facility Management



Insurance



Cement, Concrete & Ready-mix



Energy and District Cooling Plant



Mining & Quarry



Oil & Gas

INDUSTRIES



Elevators & Escalators



Marine & Seafood



Farms & Estates



Wholesale & Distribution



**Water & FMCG - Logistics,
Distribution, Production &
Maintenance.**



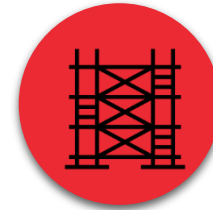
Defense & Security



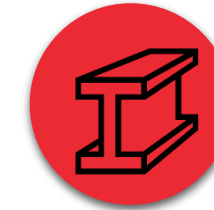
Life Science



**Real Estate and
Property Management**



Scaffolding & Engineering



**Steel Manufacturing &
Engineering**



**Construction &
Contracting**



**Aluminum &
Glass**

THANKYOU

APTERP[®]
BUSINESS STRATEGY OPTIMIZED

ADAPTIVE BUSINESS CONCEPTS LLC.

PO Box 122779, Dubai, United Arab Emirates.

Email: Sales@apterp.com, Tel : +971 4 3960 461

Mobile: 056 175 0641, 056 152 1521